



Precision Machining to Your Specifications





*We manufacture high quality machined parts to your specifications, your standards, in your timeline.*

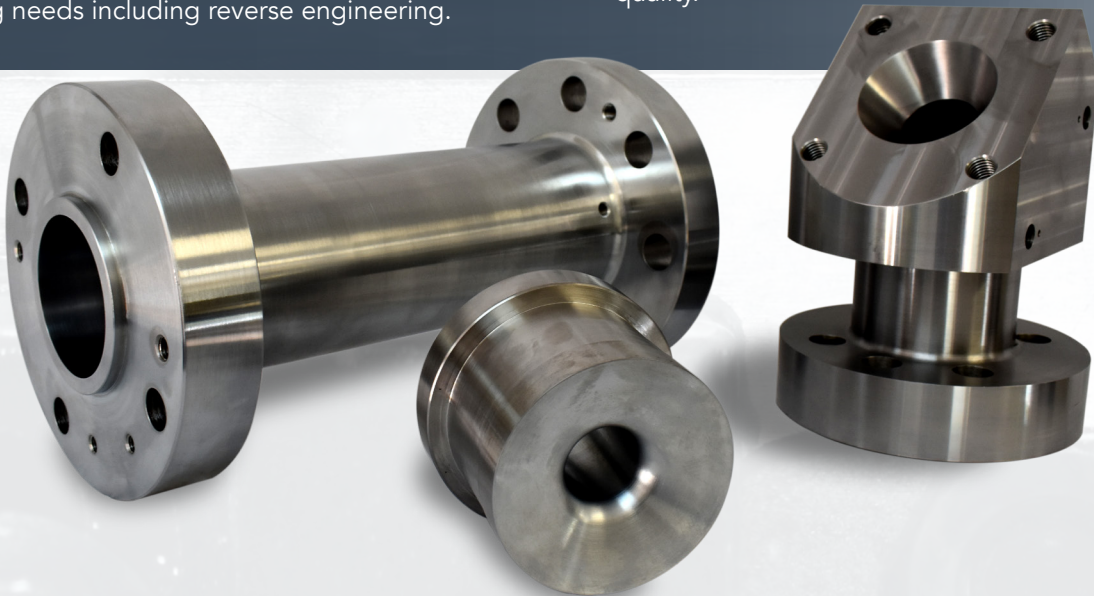
## *Precision Machining to Your Specifications*

J-K Tool Co., Inc. specializes in manufacturing fixtures and high-precision machined parts for plastics, aerospace, medical, automotive, and other commercial industries.

We have over 35 years of experience machining a wide variety of materials from steel and aluminum to Teflon and aircraft alloys. We also have the ability to work with our customers to create solutions to any unique machining requirements. Our engineering staff utilizes SolidWorks and AutoCAD to accommodate our customers with any design and drafting needs including reverse engineering.

We continue to grow because of our commitment to our customers, which rely on our ability to manufacture a wide variety of parts, including those with extremely tight tolerances. By maintaining a comprehensive selection of materials in stock, we allow for short turn around times so that our customers can meet their deadlines.

With our dedication to customer satisfaction, we are committed to continuously improving our process to maintain our reputation of reliability, efficiency, and quality.



Currently, J-K Tool runs over **75 machines**,  
spanning an area of **25,000 ft<sup>2</sup>**  
with our dedicated staff of over **25 employees**.

***Contact us today to review your project specifications.***

## ***Machining Capabilities***

- Turning up to 56" in diameter
- CNC/Conventional milling up to 72" in length
- Surface, cylindrical, and jig grinding
- Wire and Sinker EDM
- Deep hole drilling
- Honing

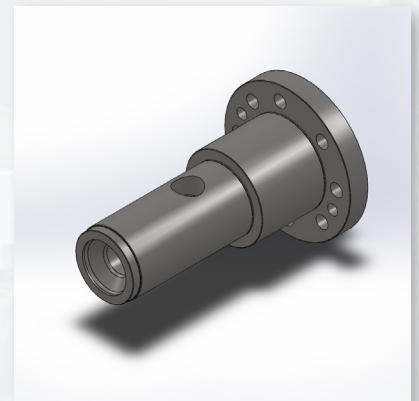


## ***Inspection (Temperature Controlled) Room Features***

- Brown & Sharpe CMM - measuring range (X x Y x Z) is 36" x 50" x 31"
- Granite surface plate - (X x Y x Z) 48" x 72" x 5"
- Profile Projector - 14" screen with digital readout
- Tesa 24" height gage
- Variety of gages
- Manufacturing to blueprint specifications
- Holding tolerances as tight as 0.0001"
- Knowledge of working with a variety of materials

## ***Computer Software Capabilities***

- MasterCam®
- AutoCAD®
- SolidWorks®



## ***Special Services***

- Plasma Nitriding 38"W x 48"H x 100"L
- Mig and tig welding
- Sandblasting



[www.j-ktool.com](http://www.j-ktool.com)



## Equipment List

### CNC Milling

- 2 Vertical CNC Kuraki ATC 32 Tools (Table Travel: X-78", Y-31", Z-30")
- 1 Vertical CNC Matsuura ATC 35 Tools (Table Travel: X-41", Y-20", Z-20")
- 1 Vertical CNC Mori Seiki ATC 30 Tools (Table Travel: X-49", Y-25", Z-27")
- 1 Vertical CNC Hardinge VMC800 ATC 20 Tools (Table Travel: 30" X 20")
- 1 Vertical CNC Milltronics (Table Travel: 18" X 12")
- 3 Horizontal CNC HAAS EC1600, Built in 30" Rotary Table, 5 Axis (Table Travel: X-64", Y-40", Z-32")
- 1 Horizontal CNC HAAS EC2000 (Table Travel: X-84", Y-40", Z-32")

### Manual Milling Machine

- 1 Lucas Bore Mill Table Travel (X-72", Y-48", Z-48")
- 1 Pratt & Whitney No. 2A Jig Border with Dro
- 7 Bridgeport - 2J Head 48" Table Dro & Power feed
- 1 Hitachi Milling Machine with 15"x64" Table

### Lathes (CNC & Manual)

- 3 Tarnow Lathe 22"x80", 15HP (Swing in Gap: 30"x12")
- 1 Takisawa Lathe 14"x 32, 5HP with travel dial
- 1 Summit Lathe 25"x80", 20HP (Swing in Gap: 35"x14")
- 1 Kingston Lathe 26"x90" (Swing in Gap: 35"x14")
- 1 Vertical Turret Lathe 56" with Dro
- 1 CNC Hitachi Seiki Lathe
- 1 CNC Takisawa Lathe with 2 5/8" dia. thru spindle
- 1 CNC Milltronics Lathe 20"x60"

### Gundrill

- 1 Eldorado Gun Drill (Max Size: 3" dia. x 70")

### EDM

- 1 Charmilles Roboform 40 Sinker EDM (Size: X-18 5/8" , Y-14 3/4" , Z-20")
- 1 Charmilles Robofil 30 Wire EDM (Size: X-15", Y-9", Z-15 3/4")

### Grinders (Surface & Cylindrical)

- 1 Supertec Universal Cylindrical Grinder (Size: 15" Swing dia. x 60"lg)
- 1 SMTW Cylindrical Grinder (Size: 20" Swing dia. x 80"lg)
- 2 Mattison Surface Grinders (Size: Up to 26"x96")
- 1 Moore Jig Grinder No. 3
- 2 Blanchard Grinders (Size: Up to 48")
- 1 Large Honing Machine
- 1 Springfield Vertical ID/OD Grinder (Size:49" Swing dia.)